

ADDING A WATERMARK

This method can be used in both Photoshop CS and Elements, and illustrates the use of blending modes.

Open an image and select the Type Tool. Choose a fairly heavy typeface such as Arial Black and position the cursor where you want the watermark to begin.

Photoshop CS:

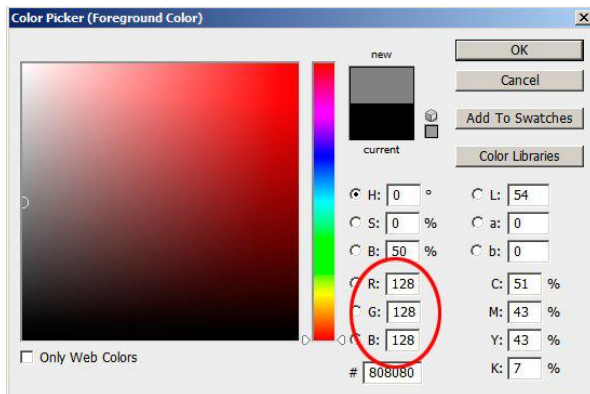


Elements:

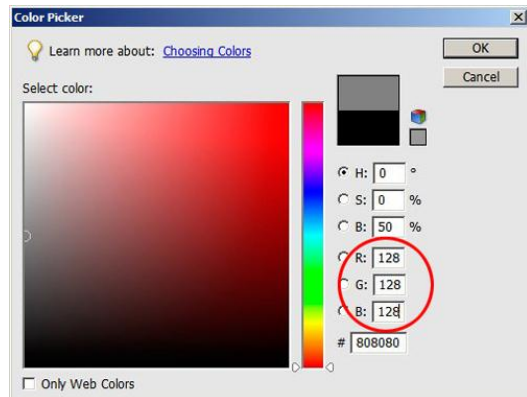


In the Options along the top of the screen, click the swatch colour:

Photoshop



Elements:



Set the text colour to 50% grey. Use HSB values of 0-0-50 or RGB values of 128-128-128.

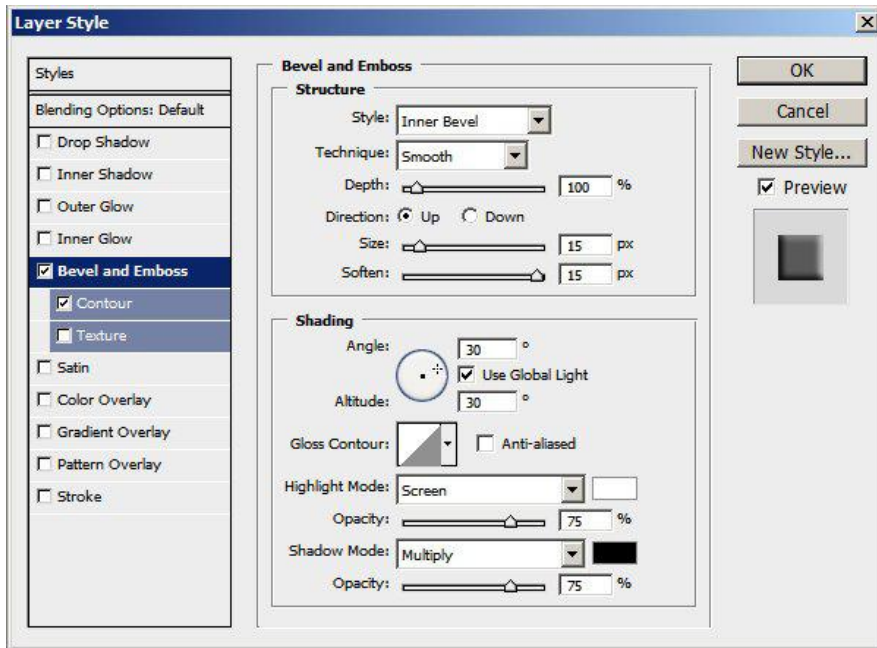
Type the copyright symbol followed by whatever text you want, for example your name, e.g.
© A N Other



To get the copyright symbol ©, hold down the Alt key and type 0169 on the numeric keypad. Note that this doesn't work with the number keys along the top of the keyboard, and on a laptop or keyboard without a numeric keypad, Num Lock must be on, and the numbers on the mjklui0789 keys must be used. (Don't forget to switch off Num Lock afterwards!) On a Mac, enter Option + C to type ©.

Use the Move Tool to resize and position the text as desired, and double click to commit the changes. Add a bevel to the text.

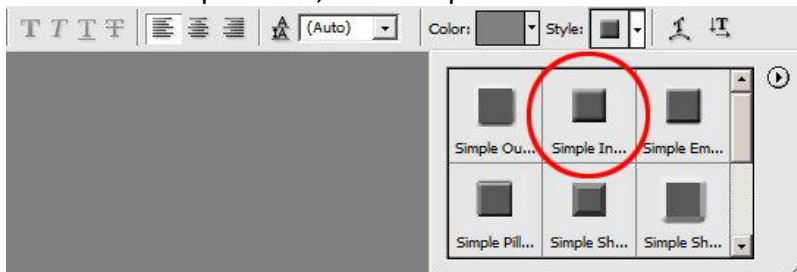
In Photoshop, double-click on the text layer in the layers palette. This brings up the Layer Style Palette. Double click on Bevels and Emboss in the Styles menu, to bring up the Bevels and Emboss palette. Set Style to Inner Bevel, Size to 15px, Soften to 15 px. (These are the values used in the example below. Experiment with the settings to see what looks best. The other settings can be left at their default values, though do try experimenting with them for some interesting results.)



In Elements, click on Style in the top menu

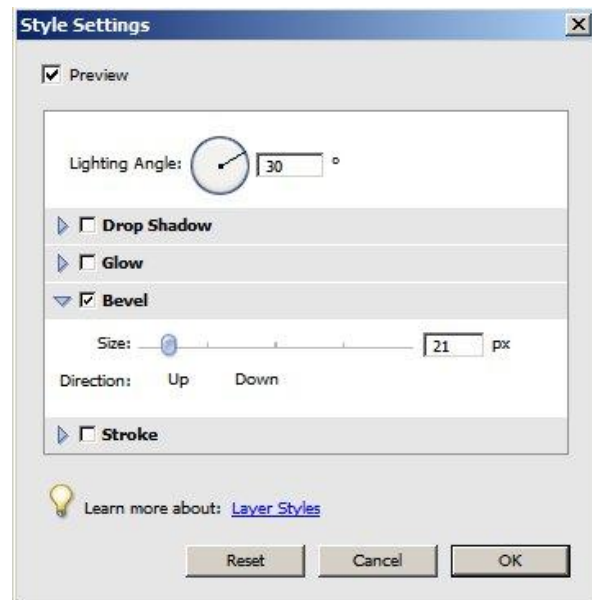
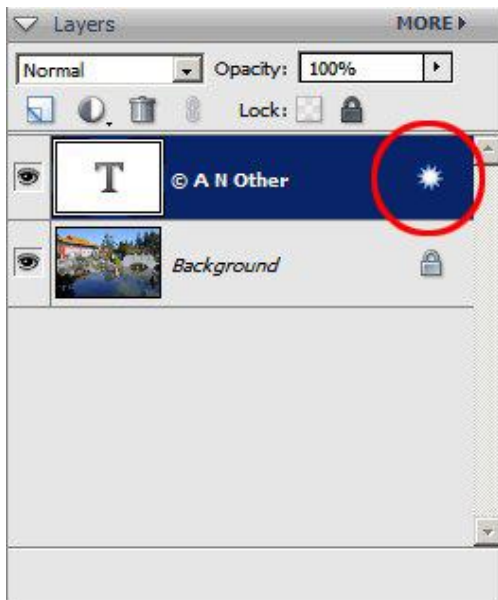


and select Simple Inner, for example.





Double-click on the star icon in the type layer to bring up the Style Settings dialog box, allowing adjustments to be made to the bevel, if desired.



In the Layers Palette, change the blending mode to Overlay, or Hard Light. Either works well. The opacity can also be reduced if required, to render the watermark less obtrusive.

If you'd prefer the watermark to be a little more visible, try a colour value of 60% grey for the type, by setting HSB to 0-0-60.

The watermark can be moved around the image using the Move Tool, for the best effect.

Flatten the image before saving as a jpeg. Right-click on the Background Layer to open a menu to flatten, or go to *Layer>Flatten Image*.